

# ENCLOSURES



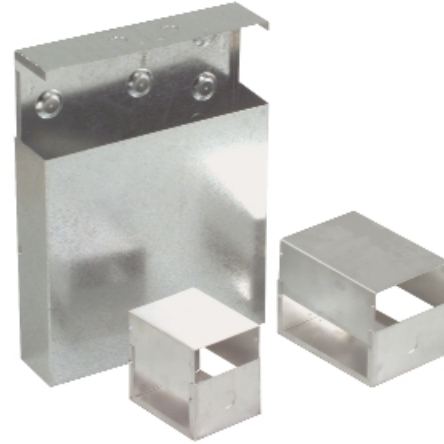
## MISCELLANEOUS ENCLOSURES B SERIES, MODEL 14121-000

### DESCRIPTION

**B Series Small Enclosures** are versatile boxes for relays, transducers, and other remotely mounted devices. The two-piece design allows easy access as the sections slip together and fasten with either a built-in snap lock or furnished sheet metal screws.

### FEATURES

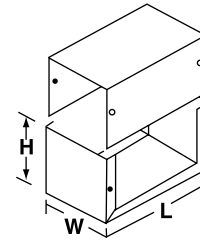
- *Two-piece construction*
- *Flanged sections to assure proper shielding*
- *1/2" knockouts top and bottom*
- *Natural aluminum or galvanized steel finish*



### DIMENSIONS/ORDERING INFORMATION

ENCLOSURE MODEL	DIMENSIONS in (cm)			WEIGHT lb (kg)	ACCESSORIES INCLUDED
	L	W	H		
B-5*	5 (12.7)	4 (10.16)	3 (7.62)	0.5 (0.2)	none
B-7*	7 (17.78)	5 (12.7)	3 (7.62)	0.75 (0.34)	none
B-12**	12 (30.48)	12 (30.48)	3 (7.62)	5.5 (2.5)	none
B-12-P	12 (30.48)	12 (30.48)	3 (7.62)	7 (3.2)	QP1212 - 11" x 11" perf-panel

\* Natural aluminum finish      \*\* Galvanized steel finish



### DESCRIPTION

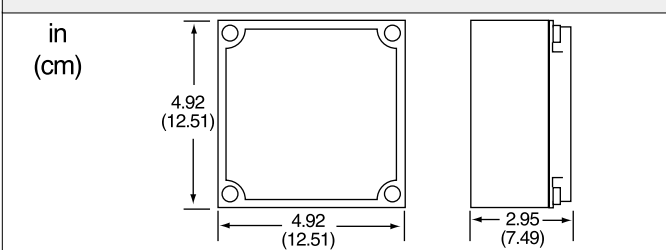
**Model 14121-000 Enclosures** are constructed of impact-resistant polycarbonate and feature a transparent, gasketed cover that keeps out dust and water. These enclosures are well suited for mounting transducers, displays, and other remote devices.

### FEATURES

- *NEMA 4X (IP67)*
- *Base molded in glass-filled polycarbonate*
- *Light gray color base*
- *Temperature range -40° to 176°F (-40° to 80°C)*
- *Cover molded in clear polycarbonate*
- *Knockouts for 1/2" and 3/4" hubs*
- *Mounting bosses provided*



### DIMENSIONS



### ORDERING INFORMATION

ENCLOSURE MODEL	DESCRIPTION
14121-000	Polycarbonate Enclosure with Transparent Cover, 0.53 lb (0.24 kg)